

Relay Sockets & Sets

Relay Sockets for XT Relays



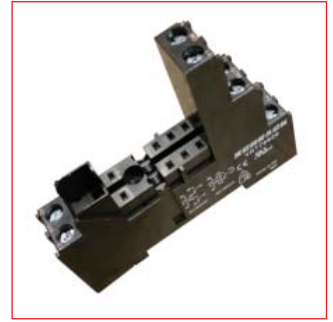
RT7872P



YRT78624



RT78725



YRT78626

Schrack-Info

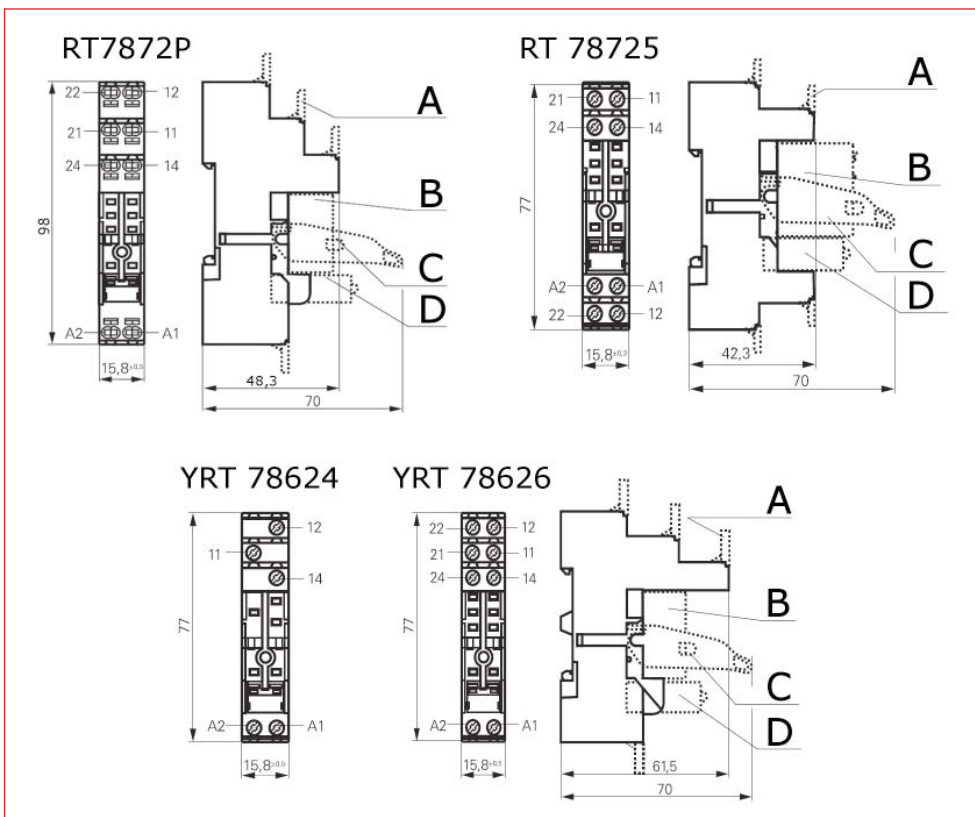
RT7872P

- Screwless terminals
- Solid wire for toolless mounting
- Twin terminals for each connection
- Cross-connector bridges to establish a connection
- Open coil circuit for active modules
- Inputs and outputs separated

RT78725, YRT78624, YRT78626

- Easy changing of the relay even if tightly packed
- High-grade terminals preventing incorrect insertion
- Captive terminal screws

Dimensions (mm)



Dimensions

A	Label
B	Relay
C	Bracket
D	Module

Relay Sockets for XT Relays

Technical Data

		RT 7872P	YRT 78624	YRT 78626	RT 78725
Rated current		2 x 8 A, 16 A*)	12 A	2 x 8 A, 16 A*)	2 x 8 A, 16 A*)
Rated voltage AC		240 / 400 V~		250 V~	
Terminals		Cage-clamp terminals		Screw terminals	
Terminal torque according to IEC 61984		-		0.5 Nm	
	Max.	-		0.7 Nm	
Terminal capacity	Copper wire	1 x 0.75 / 1 / 1.5 mm ² , 2 x 0.75 / 1 mm ²		2 x 2.5 mm ²	
	Stranded wire	1 x 0.75 / 1 / 1.5 mm ² , 2 x 0.75 / 1 mm ²		2 x 2.5 mm ²	
	With ferrule (DIN 46228/1)	1 x 0.75 / 1 mm ² , 2 x 0.75 mm ²		2 x 1.5 mm ²	
	With ferrule, without insulation or insulation at least 18mm long	1 x 1.5 mm ²		-	
	Without ferrule, with standard insulation	2 x 1.5 mm ²		-	

For stranded conductors with single wires of 0.05 mm or less, the used of ferrules is recommended. When using stranded conductors without ferrules, the terminal must be opened to insert the conductor.

*For 1 pole relays (16 A) the relay terminals 11-21, 12-22 and 14-24 have to be bridged!

DESCRIPTION	AVAILABLE	ORDER NO.
DIN rail mounted plug-in socket for RT2x, RT3x, RT4x, XT, RP4x relays, pinning 5mm, max. 16A, with spring clamp terminals		RT7872P
Jumper link for connection of RT7872P		RT170P1
DIN rail mounted plug-in socket for RT1x relays, pinning 3.5mm, max. 12A, I/O - logical arrangement, with screw terminals		YRT78624
DIN rail mounted plug-in socket for XT, RT2x, RT3x, RT4x relays, pinning 5mm, max. 12A, I/O - logical arrangement, with screw terminals		YRT78626
DIN rail mounted plug-in socket for RT2x, RT3x, RT4x relays, pinning 5mm, max. 16A, conventional arrangement, with screw terminals		RT78725
Jumper bar for connection of up to 8 RT-sockets		RT170R8
Retaining clip for XT and RP relays with ejection function		XT17017
Marking tag (for YRT sockets YRT78624 and YRT78626)		YRT16040
LED module, red, 6-24V AC/DC, EM07		YMLRA024
LED module, red, 6-24V DC, A1+, EM18		YMLRD024-A
LED module, red, 6-24V DC, A1-, EM08		YMLRD024
LED module, red, 110-230V AC, EM06		YMLRW230
LED module, green, 6-24V AC/DC, EM11		YMLGA024
LED module, green 6-24V DC with protection diode, A1+, EM12		YMLGD024
LED module, green, 110-230V AC, EM10		YMLGW230
Protection diode module 6-230V DC, A1+, EM09		YMF DG230
RC Network module 6-60V AC, EM02		YMRCW024
RC Network module 110-230V AC, EM03		YMRCW230
Varistor module, 24V-AC, EM04		YMV AW024
Varistor module 230V-AC, EM05		YMV AW230



Order no. blue: on stock, usually ready for delivery on the day of order